



**CREATIVE ARTS
AND INDUSTRIES**
SCHOOL OF ARCHITECTURE
AND PLANNING

FUTURE CITIES
RESEARCH HUB

HERITAGE ARCHITECTURE

AT TE PARE SCHOOL OF ARCHITECTURE
AND PLANNING

2022 JOINT CONFERENCE OF HISTORIC PLACES AOTEAROA
AND ICOMOS NZ

13 NOVEMBER 2022

Assoc Prof Paola Boarin

Co-funder and Co-director of the FCRH | Associate Dean (Teaching and Learning)
Te Pare – School of Architecture and Planning



SOAP HERITAGE ARCHITECTURE DEGREES

Arts / Creative Arts and Industries

Master of Heritage Conservation

MHerCons

Explore the theory and practice of heritage conservation and further your career with this taught postgraduate programme.

[Apply now >](#)

Duration	Next start date	Available locations	Points	Programme type
Full-time: Varies Part-time: Varies	2023 Semester One – 27 February 2024 Semester One – 26 February	City	120 or 180	Postgraduate Taught options available

Built Heritage: Increase your knowledge of historic and modern buildings, how they were built, how to assess their heritage value and how they can be preserved or adapted in our contemporary world.

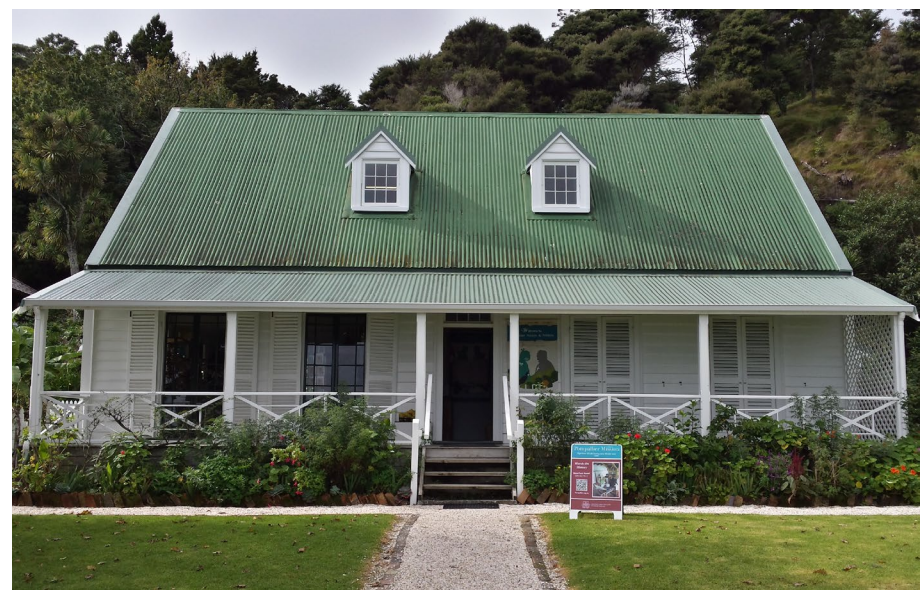
- Interfaculty Programme with the Faculty of Arts
 - 120 and 180 points options

Museums and Cultural Heritage: Develop your understanding of museums and heritage practices in visual and material culture, with a focus on Aotearoa New Zealand and the Pacific.

Year 1	120 points	Year 2	60 points
HERCONS 700 Heritage Processes <i>Compulsory core course</i>	15 pts	HERCONS 790 Research Project <i>Research project</i>	30 pts
HERCONS 701 Heritage Assessment and Conservation Planning <i>Compulsory core course</i>	15 pts	Elective course <i>Elective taught courses</i>	15 pts
HERCONS 702 Conservation of Materials <i>Compulsory core course</i>	15 pts	Elective course <i>Elective taught courses</i>	15 pts
HERCONS 703 Diagnosis and Adaptation <i>Compulsory core course</i>	15 pts		
Elective course <i>Elective taught courses</i>	15 pts		
Elective course <i>Elective taught courses</i>	15 pts		
Elective course <i>Elective taught courses</i>	15 pts		
Elective course <i>Elective taught courses</i>	15 pts		

- Built Heritage (120 points):**
- Core courses (30 points)
 - Research project (30 points)
 - Elective courses in Architecture, Anthropology, Art History, Sociology or Museums and Cultural Heritage (60 points)

- Built Heritage (180 points):**
- Core courses (60 points)
 - Research project (30 points)
 - Elective courses in Architecture, Anthropology, Art History, Sociology or Museums and Cultural Heritage (90 points)



SOAP HERITAGE ARCHITECTURE DEGREES

Creative Arts and Industries

Master of Architecture (Professional) and Heritage Conservation

MArch(Prof)HerCons

Prepare for the multidisciplinary nature of contemporary practice. Gain skills in heritage conservation while completing our professionally-recognised architecture programme.

[Apply now >](#)

🕒 Duration	📅 Next start date	📍 Available locations	⊕ Points	🎓 Programme type
Full-time: 30 months Part-time: Varies	2023 Semester One – 27 February 2024 Semester One – 26 February	City	300	Postgraduate Research options available

In less time than it takes to complete both degrees separately, you will gain the qualification necessary to practice as a professional architect, as well as develop the skills and knowledge to assess, value and work with heritage buildings.

- Combined Master
- 300 points (2.5 years +)
- Part-time or full time

This programme is professionally accredited, recognised by the NZRAB, NZIA and the CAA.

Year 1	120 points	Year 2	120 points	Year 3	60 points
HERCONS 700 Heritage Processes <i>Compulsory core course</i>	15 pts	ARCHDES 700 Advanced Design 1 <i>Compulsory core course</i>	30 pts	ARCHDES 796B Thesis <i>Thesis</i>	60 pts
HERCONS 701 Heritage Assessment and Conservation Planning <i>Compulsory core course</i>	15 pts	ARCHPRM 701 Professional Studies 2 <i>Compulsory core course</i>	15 pts		
HERCONS 702 Conservation of Materials <i>Compulsory core course</i>	15 pts	Elective Seminar <i>Elective Seminar</i>	15 pts		
HERCONS 703 Diagnosis and Adaptation <i>Compulsory core course</i>	15 pts	ARCHDES 796A Thesis <i>Thesis</i>	60 pts		
ARCHDES 702 Adaptive Reuse <i>Compulsory core course</i>	30 pts				
ARCHGEN 703 Design as Research <i>Compulsory core course</i>	15 pts				
Elective Seminar <i>Elective Seminar</i>	15 pts				

MArch(Prof)HerCons (300 points):

- Core courses: 150 points
- Elective courses: 30 points
 - Thesis: 120 points



SOAP HERITAGE ARCHITECTURE DEGREES








Creative Arts and Industries

Master of Urban Planning (Professional) and Heritage Conservation

MUrbPlan(Prof)HerCons

Broaden the scope of your practice by growing your knowledge in urban planning and the preservation and adaptive reuse of heritage buildings.

[Apply now >](#)

 Duration	 Next start date	 Available locations	 Points	 Programme type
Full-time: 30 months Part-time: Varies	2023 Semester One – 27 February 2024 Semester One – 26 February	City	300	Postgraduate Taught options available

In less time that it takes to complete the two degrees separately, you will gain a professionally-recognised urban planning qualification, and increase your knowledge of how old buildings were built and how they can be preserved.

This qualification is accredited by the New Zealand Planning Institute (NZPI).

- Combined Master
- 300 points (2.5 years +)
- Part-time or full time

Year 1	120 points	Year 2	120 points	Year 3	60 points
URBPLAN 701 Urban Planning Contexts <i>Compulsory core course</i>	15 pts	HERCONS 700 Heritage Processes <i>Compulsory core course</i>	15 pts	URBPLAN 711 Urban Planning Theory <i>Compulsory core course</i>	15 pts
URBPLAN 702 Urban Planning Law <i>Compulsory core course</i>	15 pts	HERCONS 701 Heritage Assessment and Conservation Planning <i>Compulsory core course</i>	15 pts	URBPLAN 712 Sustainable Urbanism <i>Compulsory core course</i>	15 pts
URBPLAN 703 Urban Planning and the Environment <i>Compulsory core course</i>	15 pts	HERCONS 702 Conservation of Materials <i>Compulsory core course</i>	15 pts	HERCONS 790 Research Project <i>Research project</i>	30 pts
URBPLAN 704 People, Communities and Urban Planning <i>Compulsory core course</i>	15 pts	HERCONS 703 Diagnosis and Adaptation <i>Compulsory core course</i>	15 pts		
URBPLAN 705 Sustainable Infrastructure Planning <i>Compulsory core course</i>	15 pts	URBPLAN 714 Urban Planning Methods and Plan Making Studio <i>Compulsory core course</i>	15 pts		
URBPLAN 706 Māori Planning Issues <i>Compulsory core course</i>	15 pts	URBPLAN 715 Urban Planning Research Dissertation <i>Research dissertation</i>	45 pts		
URBPLAN 707 Urban Economic Development <i>Compulsory core course</i>	15 pts				
URBPLAN 708 Urban Design Studio <i>Compulsory core course</i>	15 pts				

MURbPlanProf)HerCons (300 points):

- Core courses: 225 points
- Research project: 30 points
- Research dissertation: 45 points



SIGNATURE COURSES

HERCONS 700 **Heritage Processes (15 Points)**

Examines heritage conservation legislation, policy, guidelines and processes. Includes international context as well as New Zealand laws and processes.

HERCONS 701 **Heritage Assessment and Conservation Planning (15 Points)**

Examines the assessment of cultural heritage value and the use and preparation of conservation plans to guide heritage conservation work. Coursework comprises the researching and writing of a conservation plan.

HERCONS 702 **Conservation of Materials (15 Points)**

Examines the theory and practice of conserving materials commonly found in heritage buildings and artefacts, including stone, brick, timber, concrete and steel.

HERCONS 703 **Diagnosis and Adaptation (15 Points)**

Examines the investigation of existing building fabric, diagnosis of issues impacting upon the state of repair or the level of comfort, and the adaptation of heritage buildings, including strengthening, energy upgrading, reuse and the design of additions and alterations.

SIGNATURE COURSES

ARCHDES 702 **Adaptive Reuse (30 Points)**

A studio-based inquiry into an architectural topic in the field of adaptive reuse, approved by the Head of School of Architecture and Planning.

HERCONS 790 **Research Project (30 Points)**

A research project in the field of heritage conservation which may include an internship. Placements and topics to be approved by the Head of School of Architecture and Planning.

HERITAGE & CLIMATE CHANGE



**The Future
of Our Pasts:**
Engaging
cultural heritage
in climate action

*Outline of Climate Change and
Cultural Heritage*

<https://www.icomos.org/fr/themes-dactualite/changement-climatique/9544-icomos-releases-future-of-our-pasts-report-to-increase-engagement-of-cultural-heritage-in-climate-action-2>

- More sensitive to climatic changes and severe weather events
 - More sensitive to other natural pressures (e.g., earthquakes)
- More sensitive to effects of neglect, sub-use and poor indoor conditions



**HISTORIC ENVIRONMENTS ARE
NON-RENEWABLE RESOURCES**



**HERITAGE AND HISTORIC BUILDINGS
NEED TO BE PRESERVED
AS 'LIVING BODIES'**



**CREATIVE ARTS
AND INDUSTRIES**
SCHOOL OF ARCHITECTURE
AND PLANNING

FUTURE CITIES
RESEARCH HUB

THANK YOU



futurecities@auckland.ac.nz



www.futurecities.ac.nz



[@cities_hub](https://twitter.com/cities_hub)



<https://www.youtube.com/channel/Uck2LqkvfDHN68BGc2ifUsjw/featured>